

Satamatie Service Community



Satamatie Service Community

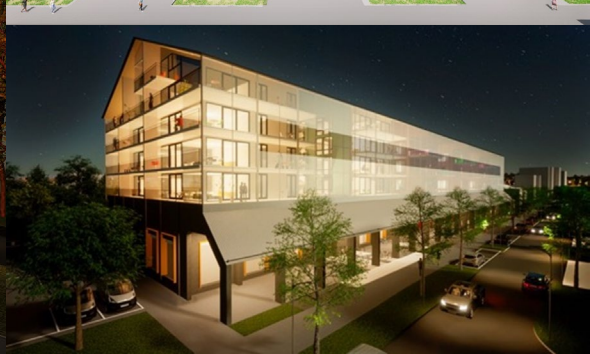
- Location:
 - Satamatie 34, 90520 Oulu
- Completion:
 - December 2024
- Building size:
 - 10 600 m²
- Commercial spaces:
 - 1: 927,5 m²
 - Zoning for grocery store
 - 2: 135,5 m²
 - 3: 124,5 m²



Oulu – “Capital of Northern Scandinavia”

- University city: University of Oulu
- Population 31st Oct. 2024: 216 714
- Population est. 2040: 240 000

Illustrations



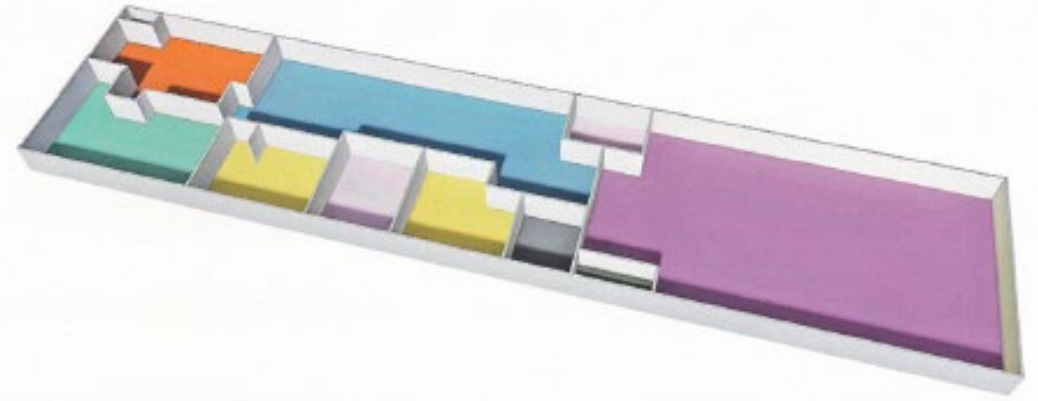
Functions in the Service Community

- Elderly care home
 - Operator: Norlandia Care
 - Housing for 124 people
- Day care centre
 - 75 children
- Dog day care
 - Operator Norlandia Care
 - 8 dogs
- Gym
 - Operator: Kuntokeskus Liikku
- 14 Commercial apartments
 - Sizes between 55 m² to 144 m²
- Commercial spaces
 - Restaurant
 - Cafeteria
 - Grocery / Department store

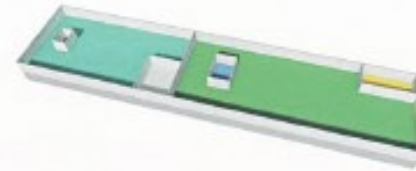
Building space plan

- Commercial space
 - Zoned for grocery store
- Commercial space
- Elderly care home
- Day care centre
- Gym
- Commercial apartments

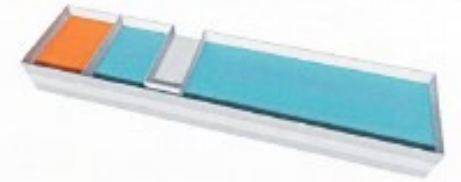
1. FLOOR



2. FLOOR



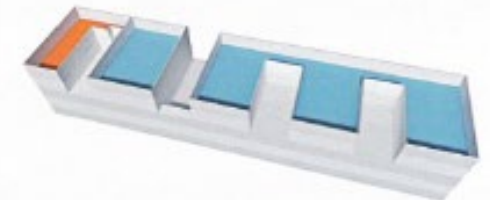
3. FLOOR



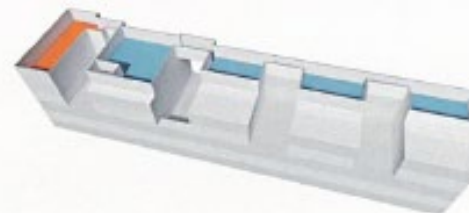
4. FLOOR



5. FLOOR



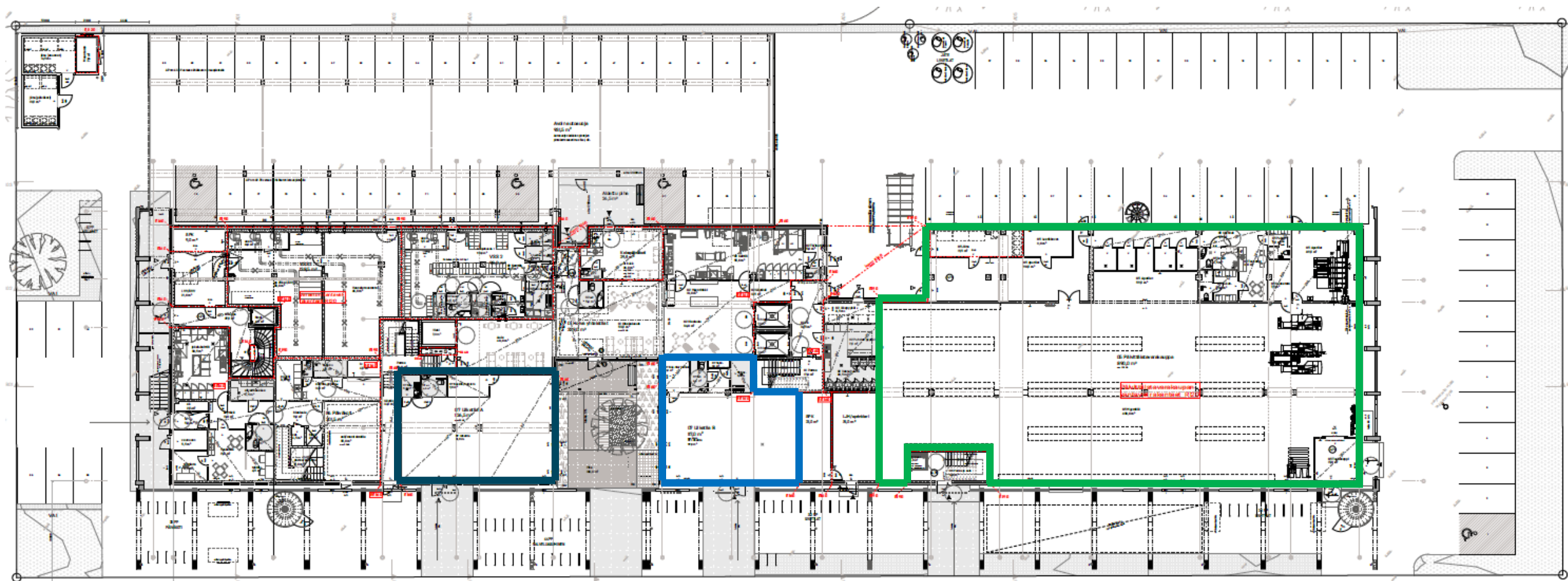
6. FLOOR



7. FLOOR



Commercial spaces in the building



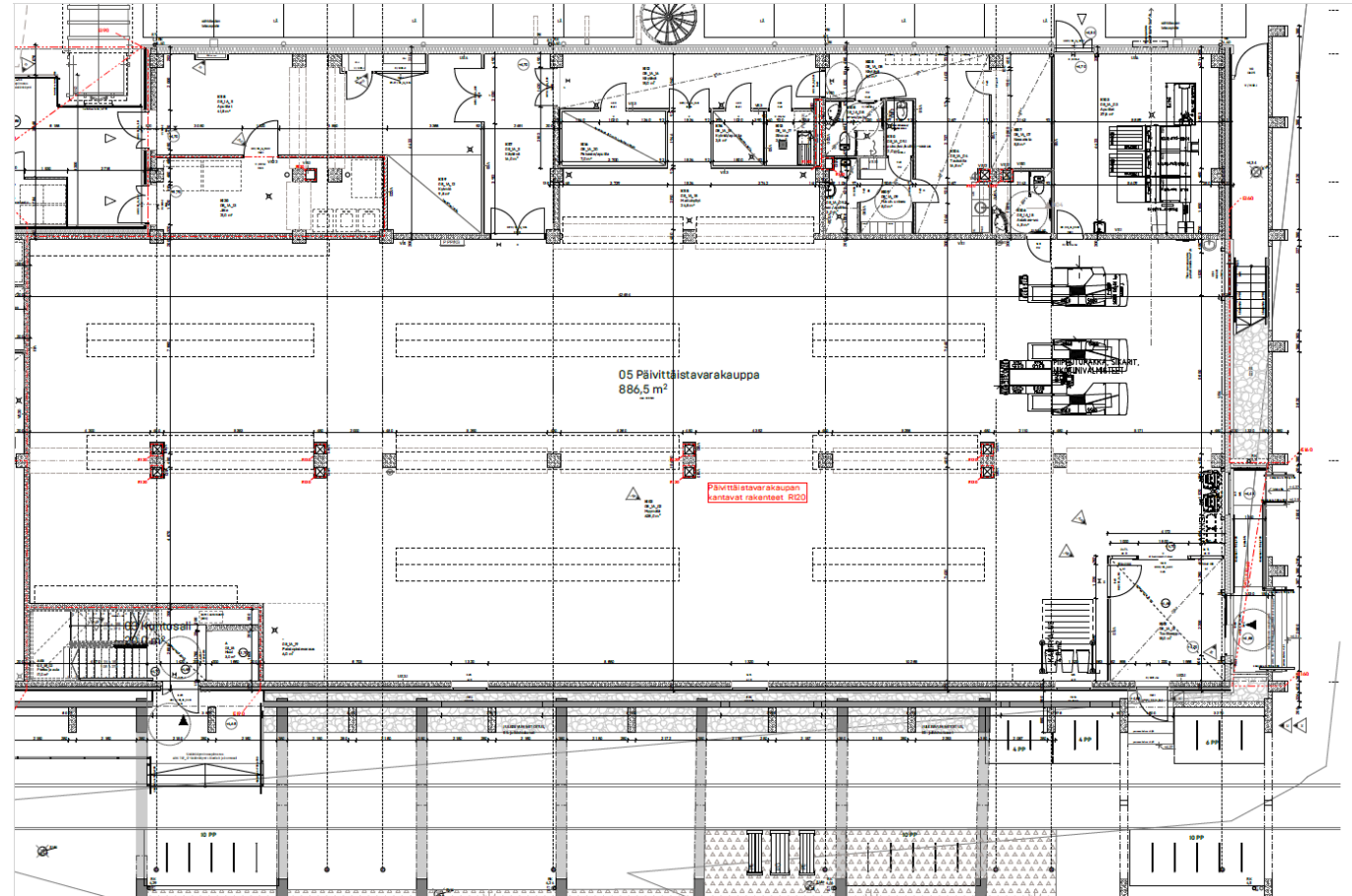
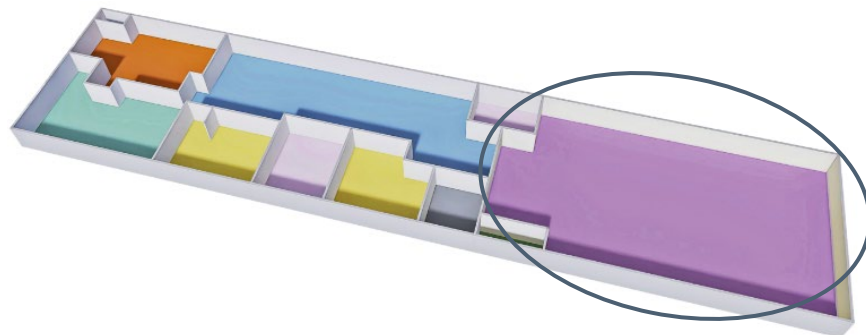
Commercial space 124,5 m²

Commercial space 135,5 m²

Commercial space 927,5 m²

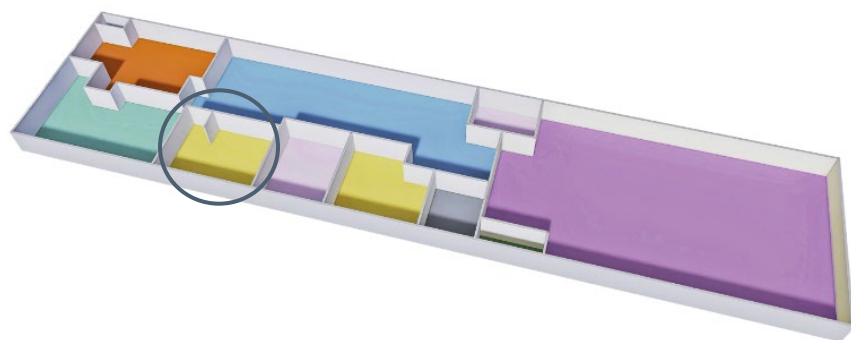
Commercial space – Grocery / department store

- Grocery store
 - Space is zoned for grocery store. Other uses also possible.
- Size of space:
 - 927,5 m² + 100 m² technical space 2nd floor
 - Effective area of the store 628 m², maintenance and other auxiliary spaces 256 m²

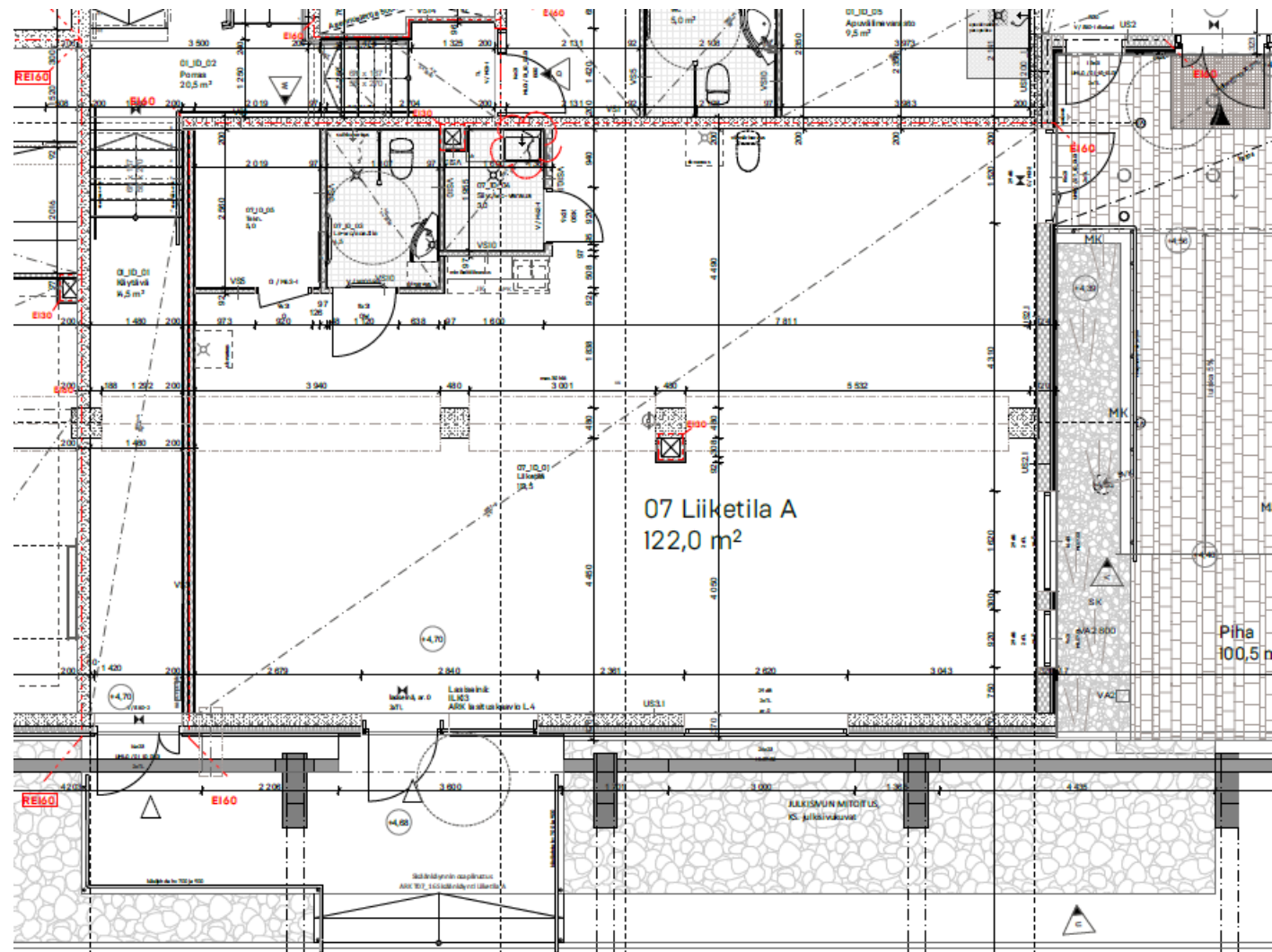


Commercial space – 135,5 m²

- Size:
 - Total area 135,5 m²
 - Effective area of the space 122 m²

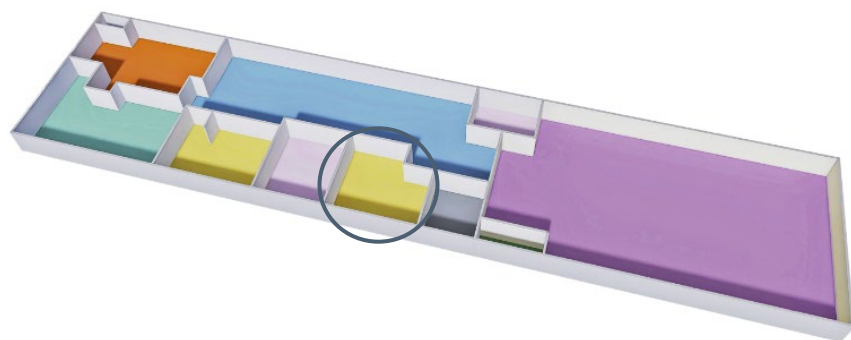


● Grocery store ● Commercial space

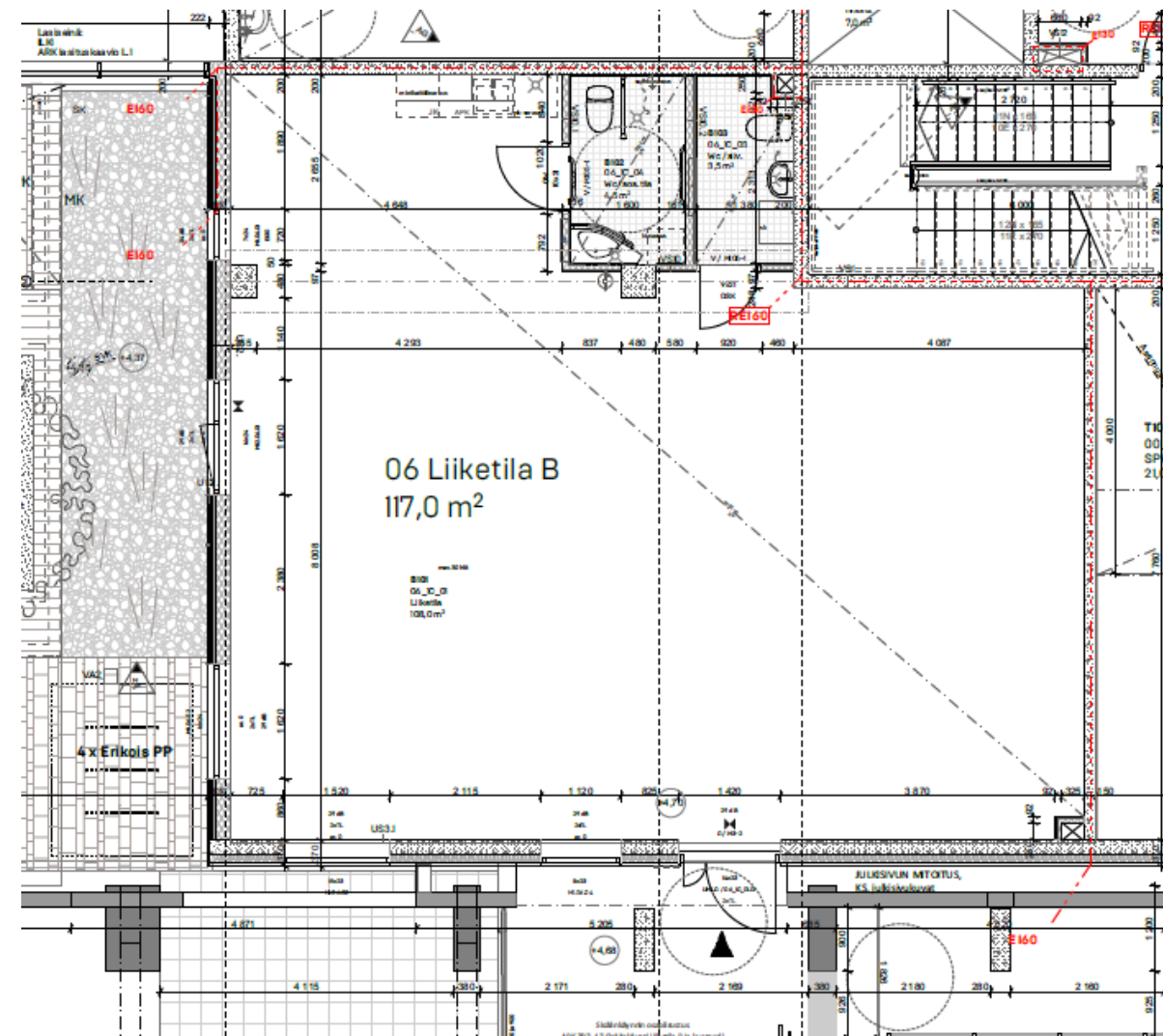


Commercial space – 124,5 m²

- Size:
 - Total area 124,5 m²
 - Effective area of the space 117 m²



● Grocery store ● Commercial space



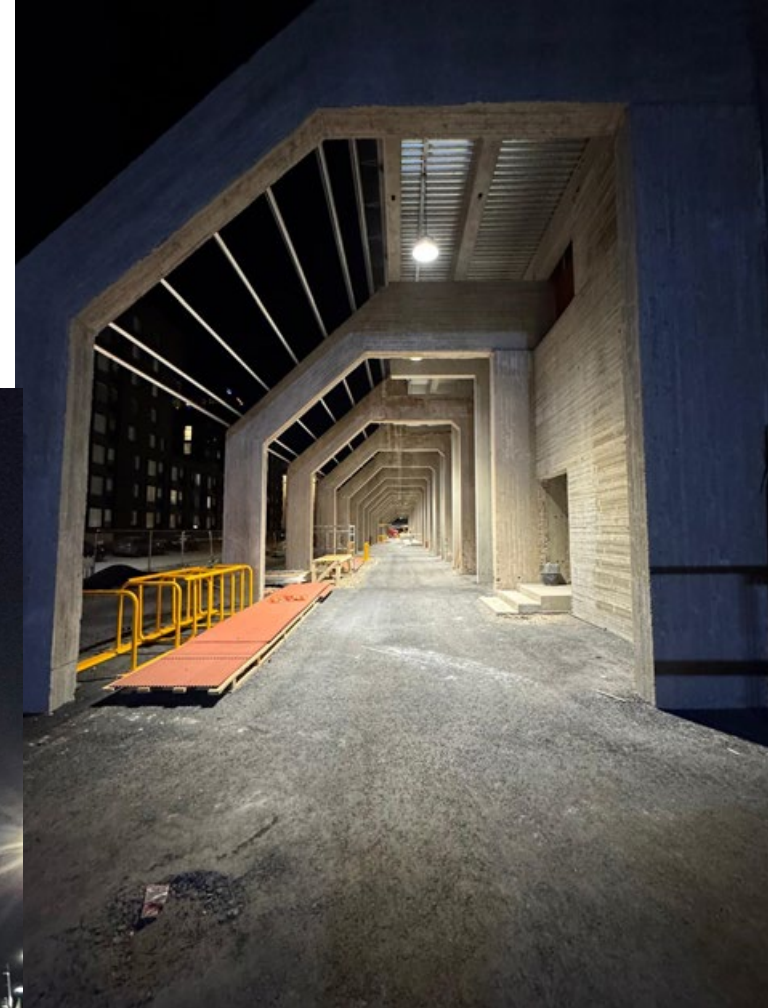


Building situation

November 2024



December 2024



Situation now

- All commercial spaces ready to lease
- Regarding the facade, small finishing works are still in progress
- The parking areas will be asphalted in the spring

Contact Us



Panu Pigg
Project manager
panu.pigg@hoivatilat.fi
+358 40 487 6082



Tuomas Hulkkonen
Portfolio manager
tuomas.hulkkonen@hoivatilat.fi
+358 40 651 6347